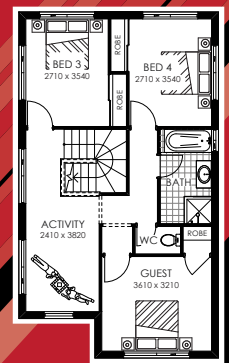
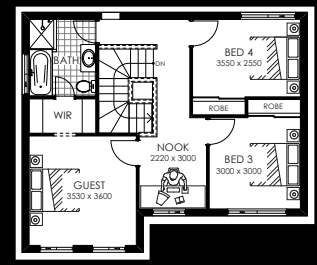


you can build sooner, for less.

the rainier | \$256,215

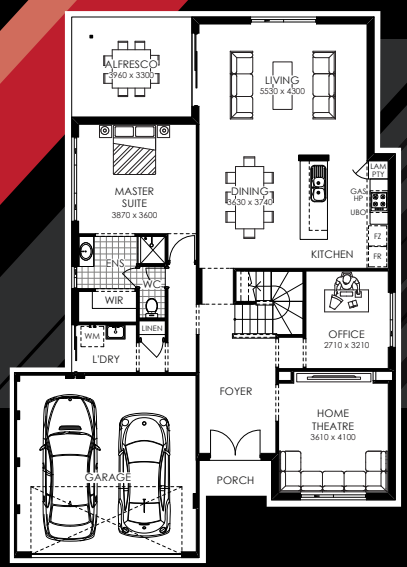


the everest | \$242,607



starting point
from \$199,990

Thought you would only be able to afford a single storey home? Think again. In-Vogue, Perth's leading two-storey homebuilder, has created the Starting Point collection - 8 new affordable homes from just \$199,990 each suited to a variety of lifestyles. Realise your two storey dream today with Starting Point by In-Vogue!



starting point
by invogue

Display homes open: Saturday & Sunday 1-5pm and Monday & Wednesday 2-5pm. Stirling, Lycium Quay Roselea. (Stanford) Ph: 9349 7554. Jindalee, Jindalee Drive (Connecticut) Ph: 9562 4904. Mandurah, Jasper Way Lakelands (Berkley) Ph: 0429 939 576. Iluka, Burns Beach Road (Notre Dame) Ph: 0418 943 549. Southern River, Aldenham Drive (Michigan) Ph: 9394 0437.

call 9202 9202 or visit twostorey.com.au

